



We Care **FOR EVERYONE**

Louisiana EMS Educational Conference and Expo



DoubleTree by Hilton Hotel
Lafayette, Louisiana

2025



Presentation of Colors

Lafayette Fire Department Honor Guard



Table of Honors

Kim Neal



The reading for an EMS Table of Honor ceremony, also known as a Fallen First Responders Memorial Ceremony, is deeply symbolic and serves to remember those who have died in the line of duty.

Here are some common elements and their symbolic meanings in such a ceremony:

- Empty Chair: Represents the absence of those who are no longer with us.
- White Tablecloth: Symbolizes the purity of the first responders' motives.
- Red Rose: Represents love for fallen comrades.
- Bible: Signifies strength through faith, often open to Psalm 91.
- Slice of Lemon: Represents the bitterness of loss.
- Blue Ribbon: Represents trust and loyalty.
- Pinch of Salt: Represents tears shed for fallen comrades.
- Inverted Glasses: Symbolize the inability of the fallen to share in a toast.
- Folded American Flag: Represents the ultimate sacrifice.

Readings often explain the symbolism of the table elements and may include a moment of silence and a toast to honor fallen first responders. Phrases expressing enduring remembrance and acknowledging the sacrifice are common. The ceremony may also include an invocation or prayer, as well as opportunities for sharing stories about the honorees.

Specific readings can be customized for the event and individuals being honored. Resources are available from organizations that memorialize fallen EMS personnel, such as the National EMS Memorial Service.



Welcome Message from the President

Dear EMS Professionals,

It is with great honor and pleasure that I welcome you to the 49th annual 2025 LANREMT EMS Education Conference and Expo. Today, we assemble under the most inclusive theme, "We Are for Everyone." This year's slogan, which also serves as the national EMS slogan for 2025, simply reflects a shared vision and commitment to serve and educate everyone. This year, we joined forces with a star-studded group of speakers, sponsors, and vendors who all share in our vision to serve and educate pre-hospital care practitioners at every licensed level. We are both thankful and delighted that you are in attendance and hope that you find this year's education both realistic, practical, educational, stimulating, and ongoing, verifiable training. As president, I challenge each of you to take full advantage of the education brought forth this year and take the opportunity to engage our vendors and other practitioners through networking. I would like to extend a special thanks to this year's conference chair, Kayla Rains, her team, and our board of directors for their hard work, dedication, and commitment to making this year's conference a success. Once again, welcome to the 49th Annual LANREMT EMS Education Conference and Expo. May this gathering inspire you, enhance your skills, and reinforce our shared mission to provide inclusive, high-quality care across every community we serve. Thank you for your continued dedication to the EMS profession. Together, let us embrace the power of education, unity, and excellence.

Sincerely
John Lane
President
LANREMT

LANREMT

Welcome Message



Welcome Message from the Chair

Dear Colleagues, Friends, and Newcomers,

It is my distinct honor and pleasure to welcome you to the 2025 LANREMT Conference.

This year, we gather under a powerful and timely theme: "We Are for Everyone." These words are more than just a slogan- they reflect our shared commitment to inclusion, equity, and the belief that innovation and progress in our field are strongest when built by diverse voices, perspectives, and experiences. LANREMT has always been a place where boundaries are pushed, ideas are challenged, and knowledge is shared freely. In 2025, we continue that tradition while doubling down on our promise to ensure that everyone, regardless of background, discipline, or career stage, feels seen, heard, and valued. Whether this is your first time attending or your fifteenth, whether you're presenting cutting-edge research or simply exploring new ideas, you belong here. I invite you to engage fully: attend the sessions that challenge you, connect with people who inspire you, and contribute to the inclusive spirit that makes LANREMT such a unique and vital community.

On behalf of the organizing committee, I want to thank you so much for being here. Let's make this an unforgettable experience together.

Warm regards,

Kayla R. Rains, BS, NRP
Chair, 2025 LANREMT Conference

Conference

Welcome Message



Welcome Message from the Vice President

As Vice President of LANREMT, I would like to welcome you all to the 2025 conference. Our theme this year is "We Care for Everyone." I am glad that you can join us for networking with new and old friends and quality CEUs. If you have any questions, please reach out to any of our board members, and we will be happy to assist you.

Brian Regan NRP,ASHM,COHC
Manager QA, HSE, Education | XstremeMD
D: 337-704-0902
Email: bregan@xstrememd.com
1-877-520-2911
1028 Forum Dr.
Broussard, LA 70518

xstrememd.com

Protecting our partners' most valuable assets

LANREMT

Welcome Message

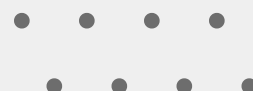
Conference

Thursday

06-12-2025

20

| Time | Course | Presenter | Room |
|-------|---|--|------------|
| 8:00 | Vendor set up and Registration | | Salon ABDE |
| 13:00 | High Quality Ventilations- (4 hour Block) | St. George Fire Department | Salon ABDE |
| 14:00 | Toxicology and EMS | Emily McGee, ULM | Oak Alley |
| 14:00 | PTSD and EMS | Jesse Griggs, Oceans Behavioral | Ashland A |
| 14:00 | Cardiac Arrest Management | Gavin Hall, Pafford EMS | Ashland B |
| 15:00 | Wilderness Medicine | Brian Regan, XtremeMD | Oak Alley |
| 15:00 | Organ Donation Awareness | Suzane Morton LOPA, Kristie Gauthreaux and Kim Neal | Ashland A |
| 15:00 | Navigating EMS Advocacy | Bill Salmeron, Chief of EMS, NOEMS | Ashland B |
| 16:00 | Chaplains Association | Michael Percer, Command Chaplain, Louisiana Fire Chaplains Network | Ashland A |



Conference

Friday

06-13-2025

| Time | Course | Presenter | Room |
|-------|---|--|------------|
| 9:00 | Welcome | John Lane President | Salon ABDE |
| 09:10 | National Anthem | Theresa Cavell | Salon ABDE |
| | Presentation of Colors/Table of Honors | Kim Neal, Jaice Mann, and Lafayette Fire Department Color Guard | Salon ABDE |
| 09:30 | Vendors Vist | | Salon ABDE |
| 10:00 | Fire as a Weapon | Oliver Hollins | Oak Alley |
| 10:00 | Autistic Behavior and Trauma-Informed Care | Jax Nation | Ashland A |
| 10:00 | Pediatric Readiness | Mendy White | Ashland B |
| 11:00 | Legal Issues in EMS | Kirk Lacour, Acadian | Oak Alley |
| 11:00 | EMS Leadership: What We can Learn From the Arts | John Cavell, BEMS | Ashland A |
| 11:00 | The EMS Connections: Bridging the Gap between First Responders and the Public | CJ Rojas III, Pafford EMS | Ashland B |
| 12:00 | State of the State | Susan Bailey, BEMS | Salon ABDE |
| 13:00 | From Chaos to Command-Burbon St. Terror Attach-Key Note | Shaq Harris, NOEMS | Salon ABDE |
| 14:00 | How to Train a Preceptor | Katherine Hutchinson and Kerri Avara, BREMS | Oak Alley |
| 14:00 | Blood in the Big Easy | Tom Dransfield, NOEMS | Ashland A |
| 14:00 | GOHSEP State of the State | Justin Gremillion | Ashland B |
| 15:00 | EMS Scheduling Practices | Jake Reynolds Pafford EMS | Oak Alley |
| 15:00 | All Swole Up and Going to the ED | Jeff Anderson, BPCC | Ashland A |
| 15:00 | OSHA Best Practices for Protecting EMS Responders | Les Powell | Ashland B |
| 16:00 | Society Meeting: Fire/EMS | | Salon ABDE |
| 16:00 | Society Meeting: Industrial | | Salon ABDE |
| 16:00 | Society Meeting: Instructor | | Salon ABDE |
| 16:00 | Society Meeting: LATEMS | | Salon ABDE |
| 16:00 | Society Meeting: Student | | Salon ABDE |
| 19:00 | Awards Panquet | | Salon ABDE |

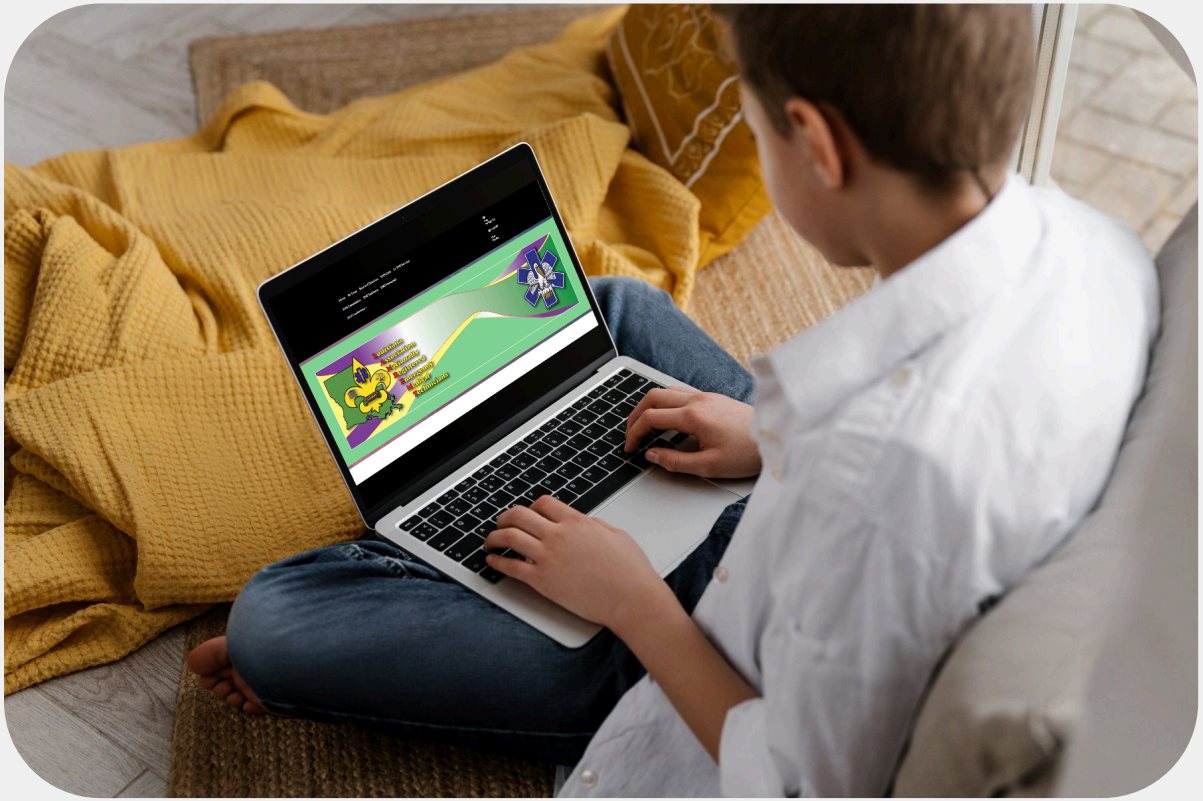
Conference

Saturday

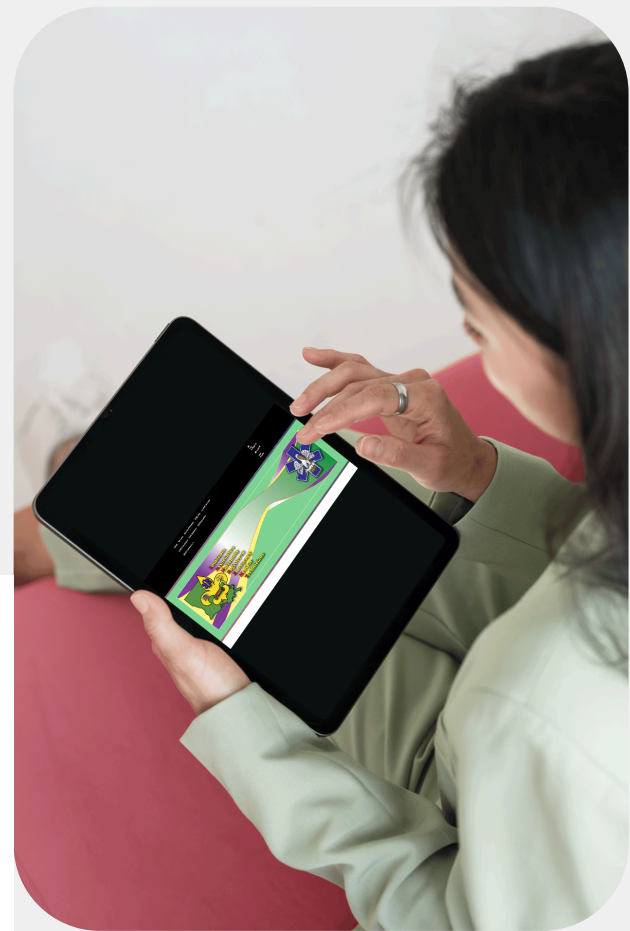
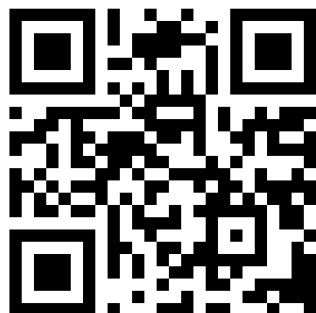
06-14-2025

| Time | Course | Presenter | Room |
|-------|--|---|------------|
| 09:00 | Situation Awareness | Chief Tim Crockett | Salon ABDE |
| 10:00 | State EMS Physician Update | Dr Godbee | Salon ABDE |
| 11:00 | EMS Efficiency Translating to Effective | Dr David Janese, Shreveport Fire Medical Director | Salon ABDE |
| 12:00 | Things that go BOOM! Explosives awareness and care for Paramedics | Craig Menefee | Salon ABDE |



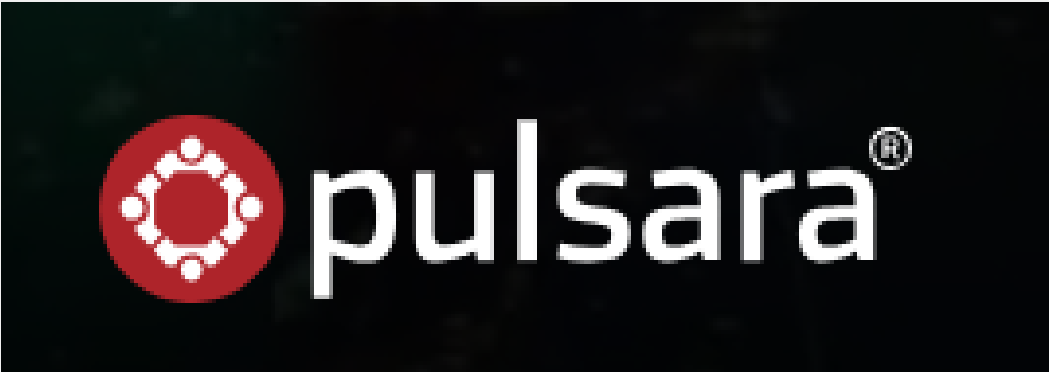


Visit **LANREMT.com**
Often



Gold

Sponsor



Gold



Sponsor

Siddons Martin



Click the Link



Bronze




Sponsors

XstremeMD



XstremeMD was founded in 2009 by a group of Emergency Medicine Physicians who recognized that Medical Care was lacking in Remote Environments and that remote health care, utilizing telemedicine, could make a significant difference in patient outcomes. Since its inception, XstremeMD has grown to include Offshore Healthcare, Onshore Healthcare, Education and Training, Corporate Solutions, Medical Case Management, Third Party Administrator Services, and Safety Technicians.

- Respectfully,
- Brian Regan NRP, ASHM, COHC
- Manager QA, HSE, Education | XstremeMD
- D: 337-704-0902
- Email: bregan@xstrememd.com
- 1-877-520-2911
- 1028 Forum Dr.
- Broussard, LA 70518
- xstrememd.com
- Protecting our partners' most valuable assets



Click the Link



Bronze



Sponsors



SCAN ME



www.AngelTrack.com

Bronze



Sponsors



Bronze



Sponsors



Bronze



Exhibitor



EXHIBITOR

Sponsors



EXHIBITOR



A DIVISION OF JONES & BARTLETT LEARNING



JONES & BARTLETT
LEARNING



Exhibitor



EXHIBITOR

Sponsors



EXHIBITOR



COME JOIN OUR TEAM

- **PARAMEDIC**
- **AEMT**
- **EMT**
- **ECO**

- Paid Vacation/Holidays
- Overtime/Advancement Opportunities
- Health/Life/Vision/Dental Insurance
- Defined Benefit Retirement Plan



Exhibitor



EXHIBITOR

Sponsors



EXHIBITOR

Henry Schein, Inc

HENRY SCHEIN®
MEDICAL | EMS

Rely on Us™

EMS
SUPPLIES, EQUIPMENT
& LABORATORY PRODUCT GUIDE

SCAN TO
SEE THE
EMS
PRODUCT
GUIDE

www.henryschein.com/ems

Bronze



Sponsors



Exhibitor



EXHIBITOR

Sponsors



EXHIBITOR



LOUISIANA OFFICE OF STATE FIRE MARSHAL



Online Services (IMS)



FETA



Save a Life



Arson Fires



Fire Safety Education



Fire is Everyone's Fight



Exhibitor



EXHIBITOR

Sponsors



EXHIBITOR



JOINNOEMS.ORG



"SO OTHERS MAY LIVE"

At New Orleans EMS, we are committed to providing the highest quality pre-hospital emergency care to our city's residents and visitors. Join our team and be a part of a family of heroes dedicated to making a difference where it matters most.

BENEFITS

- Paid Continued Education
- Discounted College Education
- Comprehensive Health Insurance
- Life Insurance
- Built In Overtime
- 13 Vacation Days
- 13 Sick Leave Days
- Maternity & Paternity Leave
- Uniform Allowance

SPECIALIZED UNITS

- EMS Rescue Team
- Hazmat Medical Team
- Bike Team
- Tactical Medical Team
- Water Rescue Team
- Urban Search and Rescue Team
- Community Outreach Team
- Diversity Equity Advocates
- Blood Medics



Exhibitor



EXHIBITOR

Sponsors



EXHIBITOR



PAFFORD
MEDICAL SERVICES



Conference Presenter



| | |
|--|--|
| St. George Fire Department | High Quality Ventilations-(4 hour Block) |
| Emily McGee, ULM | Toxicology and EMS |
| Jesse Griggs, Oceans Behavioral | PTSD and EMS |
| Gavin Hall, Pafford EMS | Cardiac Arrest Management |
| Brian Regan, XtremeMD | Wilderness Medicine |
| Suzane Morton, LOPA and Kim Neal | Organ Donation Awareness |
| Bill Salmeron, Chief of EMS, NOEMS | Navigating EMS Advocacy |
| Michael Percer Command Chaplain, Louisiana Fire Chaplains Network | Chaplains Association |
| Kim Neal and Janice Mann | Presentation of Colors/Table of Honors |
| Oliver Hollins | Fire as a Weapon |
| Jax Nation, | Autistic Behavior and Trauma-Informed Care (1 hour 10 mins) |
| Mendy White | Pediatric Readiness |
| Kirk Lacour, Acadian | Legal Issues in EMS |
| John Cavell, BEMS | EMS Leadership: What We can Learn From the Arts |
| CJ Rojas III, Pafford EMS | The EMS Connections: Bridging the Gap between First Responders and the Public |
| Susan Bailey, BEMS | State of the State |
| Shaq Harris, NOEMS | From Chaos to Command-Burbon St. Terror Attach-Key Note |

Conference Presenter



| | |
|---|---|
| Katherine Hutchinson and Kerri Avara, BREMS | How to Train a Preceptor |
| Tom Dransfield, NOEMS | Blood in the Big Easy |
| Justin Gremillion | GOHEGOHSEP State of the State |
| Jake Reynolds, Pafford EMS | EMS Scheduling Practices |
| Jeff Anderson, BPCC | All Swole Up and Going to the ED |
| Les Powell | OSHA Best Practices for Protecting EMS Responders |
| Chief Tim Crockett | Situation Awareness |
| Dr Godbee | State EMS Physician Update |
| Dr David Janese, Shreveport Fire Medical Director | EMS Efficiency Translating to Effective Leadership?? |
| Craig Menefee | Things that go BOOM! Explosives awareness and care for Paramedics |

Exhibitor



EXHIBITOR

Sponsors



EXHIBITOR



Louisiana Bureau of EMS



LANREMT EMS AWARDS



2025

Telecommunicator of the Year Award
First Responder (EMR) of the Year Award
EMT of the Year Award
Advanced EMT of the Year Award
Paramedic of the Year Award
Administrator of the Year Award
EMS Instructor/Coordinator of the Year Award
Outstanding Individual Achievement Award
Presidential Leadership Award



E.M.S. Memorial 2025

| | | | |
|--------------------------|--------------|---------------|--------------------|
| Arrington "Clay" Beasley | EMR | End of Watch: | June 2, 2024 |
| Elizabeth Benoit | EMT | End of Watch: | August 17, 2024 |
| Lionel Billizone | EMT | End of Watch: | December 17, 2024 |
| Toni Blanchard | Paramedic | End of Watch: | August 17, 2024 |
| Robert Clement | Paramedic | End of Watch: | June 5, 2024 |
| Jason Comeaux | EMT | End of Watch: | August 3, 2024 |
| Fred Dent | EMT | End of Watch: | May 13, 2024 |
| Mike Felder | EMT | End of Watch: | January 21, 2025 |
| Joel Gouedy | Advanced EMT | End of Watch: | October 4, 2024 |
| Henry Gerald Griffith | EMT | End of Watch: | March 21, 2025 |
| Juan Guerra | EMT | End of Watch: | September 12, 2024 |
| Elizabeth Hyde | Paramedic | End of Watch: | November 25, 2024 |
| Byron "Bo" James | EMR | End of Watch: | September 12, 2024 |
| Stephen Kershaw | Paramedic | End of Watch: | January 6, 2025 |
| John Markham | EMT | End of Watch: | October 6, 2024 |
| Tara McCann | EMT | End of Watch: | January 13, 2025 |
| Beau Charles Passman | EMT | End of Watch: | April 18, 2024 |
| Donald Richardson | EMT | End of Watch: | February 3, 2024 |
| Leonard Rhodes | Paramedic | End of Watch: | January 12, 2025 |
| Richard Zuschlag | CEO | End of Watch: | June 5, 2024 |

Remembered
And never
forgotten.....

"bored"

vs.

"boring"

Did you bring your significant other, and they need something to do?

Did you bring your children and need them to keep entertained?

Wild Things

Events

Restaurants

Things to Do

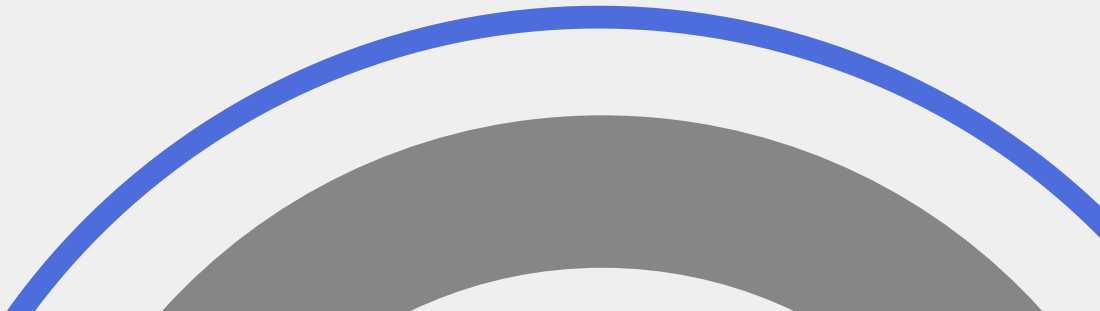


Save The Date

Same month
different year.

**SEE YOU AT
AT THE
CONFERENCE
IN
SHREVEPORT**

**50TH
YEAR**
ANNIVERSARY





***Share Your
Photos of the Conference***

Take your photos
CLICK HERE TO UPLOAD

Photo Contest

Winners will be chosen at the end of the conference.

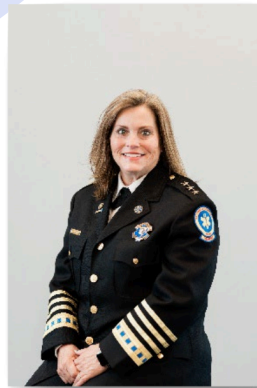


Remember
that this
upload is to
a public site,
so please be
discreet and
professional.

Louisiana Bureau of EMS



Stacy Barbay
Deputy Director



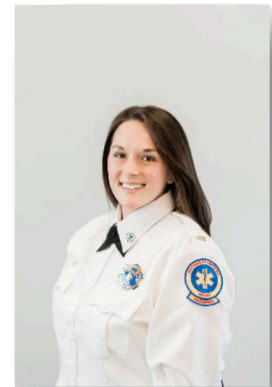
Susan Bailey
Director



John Cavell,
Education Manager



Doug Champlin
Competency Coordinator



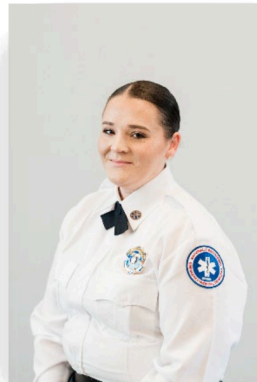
Molly Terebieniec
Compliance Coordinator



Katherine Robillard
Licensing Coordinator



Rochelle Grayer
Executive Assistant

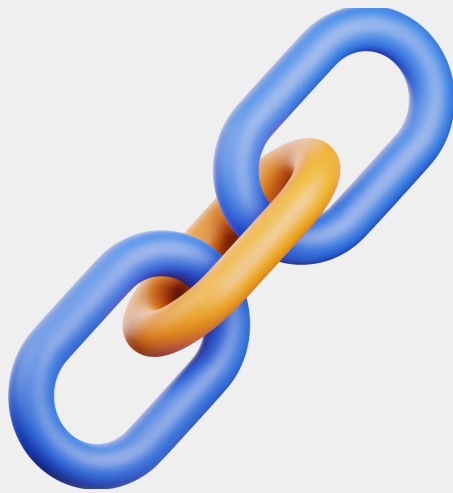


Aimee Hall
Jump Start Your Heart
Coordinator



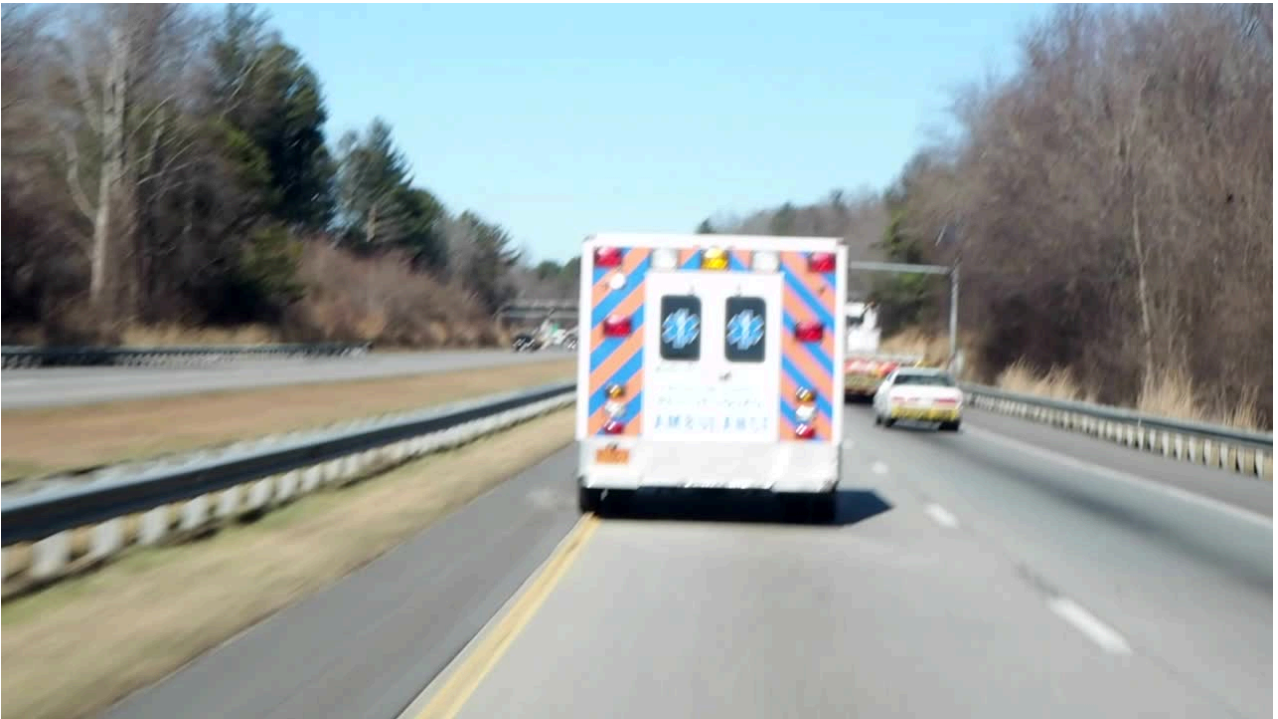
Rachael Jordan
Certification Coordinator

Post Conference Survey



click the
LINK

THANK YOU



See ya'll Next Year

50 YEARS OF LANREMT